



# THE ELECT

## VACANCIES

### CARE ASSISTANT

Care Assistants required to work with our clients delivering excellent care within the community.

Driving license desirable

### SUPPORT WORKER

Support Workers required for residential and day centre settings within the clients own settings

Driving license desirable but not essential

## QCF AND SHORT COURSES INFO

Elect are able to offer courses for care staff on the following subjects:

- \*Principles of Dementia Care
- \*End of Life Care
- \*Understanding the Safe Handling of Medicines
- \*Common Health Conditions
- \*Principles of Prevention and Control of Infection
- \*Dignity & Safeguarding in Adult Health & Social Care
- \*Mental Health Awareness
- \*Care Planning
- \*Understanding Autism
- \*Management of Diabetes
- \*Working with Individuals with Learning Disabilities
- \*Nutrition & Health
- \*Lean Organisation Management Techniques
- \*Team Leading Knowledge
- \*Caring for Children & Young People
- \*Essential Business Administration
- \*Equality and Diversity
- \*IAG
- \*Preparing to work in Adult Social Care
- \*Generic & Specialist Cleaning Principles
- \*Behaviour that Challenges
- \*Warehouse & Storage
- \*Retail Operations
- \*Good Customer Service (Conducted in a classroom environment)
- \*Maths & English (Level 1 - Conducted in a classroom environment)

ISSUE 1

12.06.2017

## Your New EHS Edition

Welcome to your new addition of The Elect. connections externally.

Here we will keep you updated with all things new and exciting going forward with Elect Healthcare in our monthly editions.

Elect Healthcare are a brand new start up healthcare company with one strong managing director and two dedicated, experienced healthcare managers with a passion to deliver excellent care in the community and residential care.

The branch will be delivering care within the Hertfordshire and Essex Counties to clients.

The branch opened in February 2017 from nothing, and have since started to build excellent

CQC have since visited the branch since Kelly Parrott



(Registered Manager) registered her name with Elect Healthcare.

CQC were highly impressed with the branch policies and procedures and compliance.

contact clients outside of Elect Healthcare.

In May 2017 the business also brought in David Woodcock (Business Development Manager) who with his knowledge and experience in care is working his way through to sell the Elect Group branding to council and private clients in the community and residential care.

Recruitment has also been a massive focus for EHS to promote the vacancies we have going forward.

We look forward to working with you!

## Meet the Team

FRANKIE CAMPBELL  
(MANAGING DIRECTOR)

INSERT PHOTO  
HERE

KELLY PARROTT  
(REGISTERED MANAGER)

INSERT PHOTO  
HERE

DAVID WOODCOCK  
BUSINESS DEVELOPMENT  
MANAGER

INSERT PHOTO  
HERE

# Community Care



At Elect we are able to offer a bespoke range of Care Services across the Essex and Hertfordshire areas.

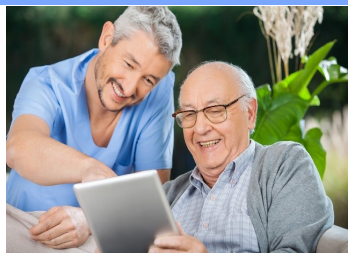
Fully dedicated to providing top quality care services to all clients, our expert team here at Elect Healthcare are fully respectful and committed at all times. We offer a range of personal care including regular home visits, meal preparation, continence care, personal hygiene assistance and emotional support. Our team also feature fully-trained specialists able

to offer medication assistance, catheter care and help with feeding when needed.

Our staff all attend the care certificate course, and some staff also hold relevant QCF's with their training.

# Residential Care

At Elect we are able to offer our services to many residential, nursing homes, day centres and hospitals across the Essex and Hertfordshire areas. Our staff are available 7 days a week to cover your care home requirements to ensure that your



staffing levels meet the CQC requirements. Our team are

fully dedicated to providing top quality care services to all of our clients and our expert team here at Elect Healthcare are fully respectful and committed at all times.

Get in touch today to find out more!

## Wordsearch of the Month

### Wordsearch 0001

Here is the first of the monthly wordsearch competition.

Find all of the words in our cryptic puzzle and the winner chosen at random will receive a £25 voucher.

Good Luck and have fun!

Name .....

Tel number .....

### Animals

C	N	L	S	D	R	J	S	H	G	X	S	N	K	L
R	H	M	C	Z	J	K	Q	H	O	E	Q	X	O	E
W	B	I	J	M	T	Y	U	O	A	R	J	W	L	N
B	L	Z	N	B	B	Z	I	L	C	V	S	E	U	B
N	F	C	W	C	Z	E	R	H	K	H	P	E	T	T
E	A	V	D	J	H	Q	R	P	Y	H	P	A	A	T
Y	I	C	K	G	E	I	E	T	A	E	E	Z	C	D
E	F	F	A	R	I	G	L	N	V	Q	K	V	C	U
K	M	O	U	S	E	J	T	L	Y	L	D	N	V	Z
N	H	X	J	E	T	L	G	A	A	I	G	N	O	J
O	S	K	P	I	T	B	V	G	Y	O	X	G	C	M
D	Q	E	B	V	A	E	I	W	B	N	L	R	O	E
Y	T	B	C	B	Z	P	T	D	H	O	M	P	G	D
Z	A	T	A	O	G	M	X	J	O	E	B	P	C	I
R	P	B	P	F	Z	G	I	M	D	D	V	T	I	U

- CAT
- DONKEY
- GOAT
- MONKEY
- RABBIT
  
- CHINCHILLA
- ELEPHANT
- HORSE
- MOUSE
- SEAL
  
- DOG
- GIRAFFE
- LION
- PIG
- SQUIRREL